



*Park Hotel* ★★★★★



## SEASIDE PARK HOTEL CONFERENCE PACKAGE

The following services are included in our conference package:

### FULL-DAY PACKAGE

- A conference room appropriate for the number of persons booked
- Standard conference technology: overhead projector, beamer, screen, flipchart, writing utensils, WLAN for the participants
- Two theme coffee breaks of choice including tea and coffee specialities
- Lunch (3-course chef's choice menu or lunch buffet from 30 persons), including a soft drink
- Two beverages: choice of juices, cola or water in conference room

**Price per person/day € 44.00**

### ADDITIONAL BUILDING BLOCKS

You can also book additional services at the following added price per person:

#### Building block A

- Greeting coffee
- Unlimited soft drinks in conference room plus € 5.00

#### Building block B

- One dinner plus € 15.00

### BONUS

In the months January/February and July/August we will assume the costs of each 11th participant in a conference package that you book.

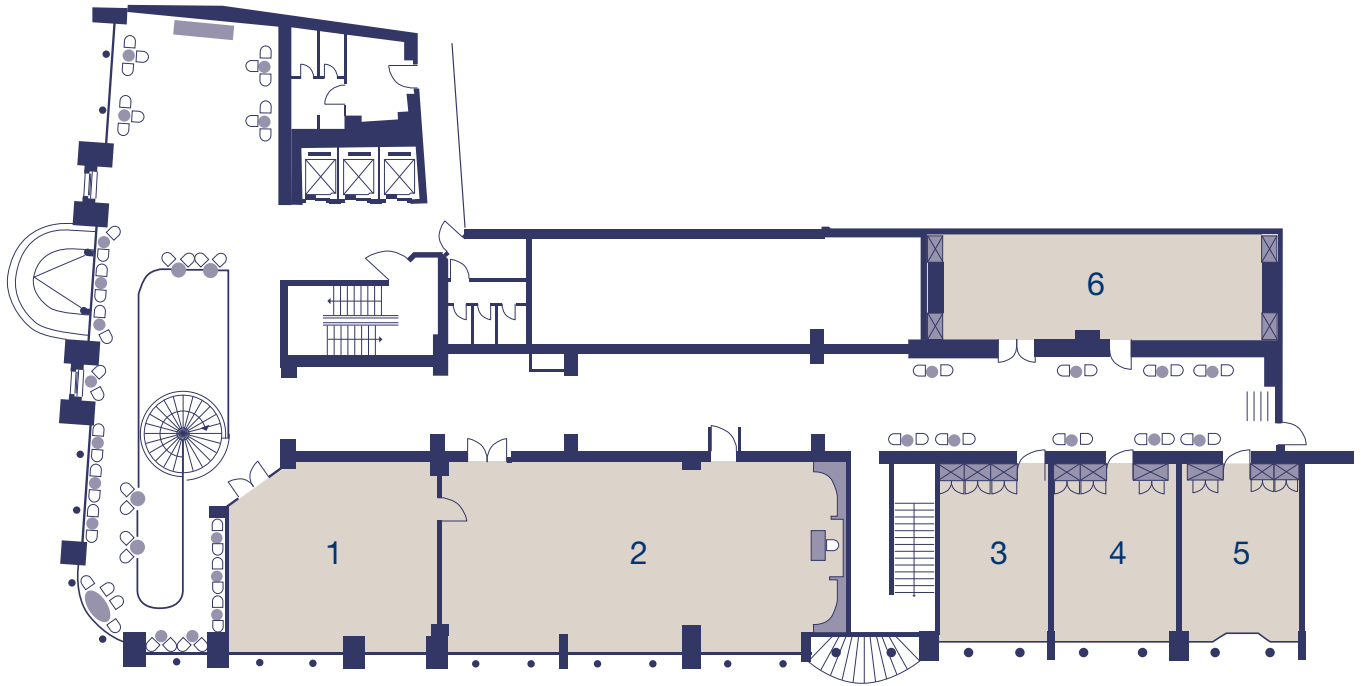
## CONFERENCE TECHNOLOGY

· Screen big 3,20 m x 2,50 m	30,00 €
· Metaplan wall	8,00 €
· Bulletin board (incl. pens and paper)	8,00 €
· Facilitator suitcase	25,00 €
· Microphone system with 1 microphone	40,00 €
· Additional microphone	each 20,00 €
· Wireless microphone (Headset)	
· Wireless microphone (Standard)	
· Cable microphone	
· Hi-fi system with CD player	30,00 €
· TV with DVD player	60,00 €
· TV with VHS	50,00 €
· LED videoprojector (Beamer) 2000 Ansi-Lumen	135,00 €
· Videoprojector (Beamer) 1600 Ansi-Lumen	120,00 €
· Overhead Projector 250 watt incl. sheets	10,00 €
· Laserpointer	5,00 €
· Lectern	15,00 €
· Dancefloor	on application
· Wireless internet (24 h access)	5,50 €

Subject to alterations, referred prices are quoted per facility per day. Naturally we are happy to solicit further technical equipment offerings if needed.



**FLOORPLAN AND SEATING**



Room	m <sup>2</sup>						Rent up to 4 h	Rent from 4 h
Room 1 with daylight 8,60m x 7,00m x 2,60m	60	40	30	20	-	40	180,00 €	350,00 €
Room 2 with daylight 16,30m x 7,50m x 2,60m	123	110	80	45	-	85	300,00 €	580,00 €
Room 3 – 5 with daylight 6,00m x 4,90m x 2,15m	30	-	-	-	14	-	70,00 €	100,00 €
Room 6 without daylight 14,00m x 4,20m x 2,60m	68	60	40	25	-	60	130,00 €	230,00 €